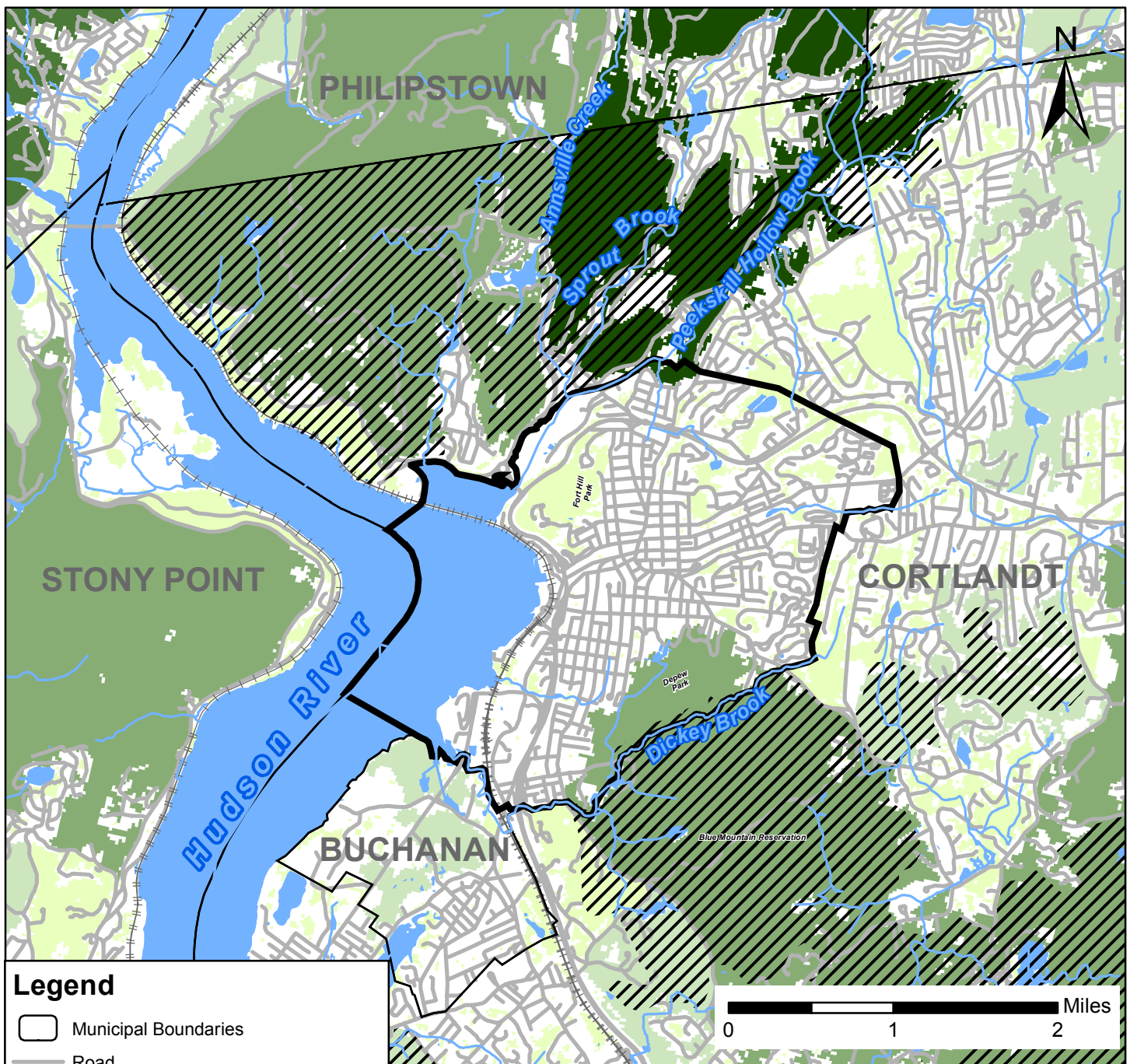


Figure 6: Forests in the City of Peekskill



Legend

- Municipal Boundaries
- Road
- NYS Rail Lines
- Stream
- Waterbody
- Croton-to-Highlands Biodiversity Areas

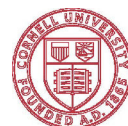
Forest Block Size (acres)

- Globally Important ($\geq 15,000$)
- Regionally Important (6,000-14,999)
- Locally Important (2,000-5,999)
- Stepping Stone (200-1,999)
- (0-199)

This map shows contiguous forested blocks of New York State by acreage for the City of Peekskill, Westchester County. The blocks were developed using 2010 forest cover data from the NOAA Coastal Change Analysis Program and buffered roads. This map was produced as part of a habitat summary for the city. For more information, please contact NYSDEC's Hudson River Estuary Program Conservation and Land Use Specialist Nate Nardi-Cyrus at (845)256-3062 or nate.nardi-cyrus@dec.ny.gov. <http://www.dec.ny.gov/lands/5094.html>
Data also available for interactive viewing at www.dec.ny.gov/lands/112137.html

Data Sources:

Cornell Department of Natural Resources: forest blocks (2015 - based on 2010 NOAA CCAP land cover), NYSDEC: NHD streams and waterbodies (2008), Metropolitan Conservation Alliance: Croton-to-Highlands Biodiversity Areas, NYS Office of Information Technology Services: roads, railroads, and municipal boundaries (2018). Map created 2018.



Cornell University